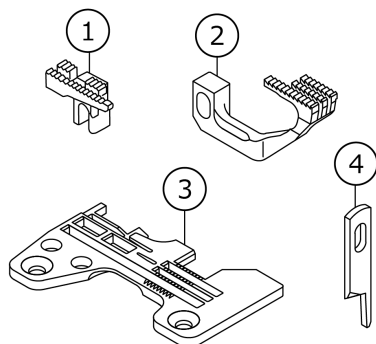


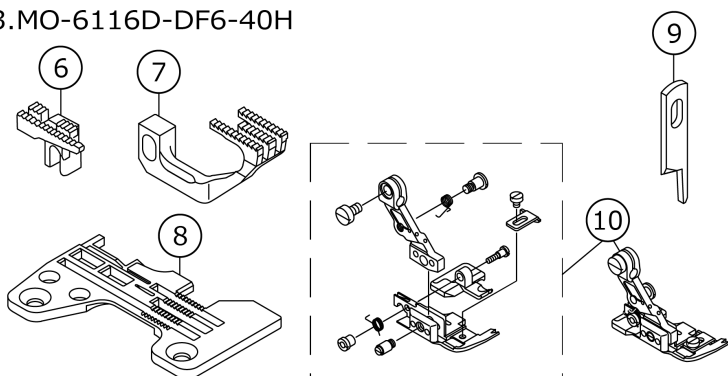
# MO-6116D SUBCLASSES

## MO-6116D SUBCLASSES (1)

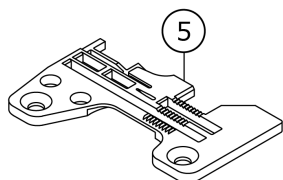
1. MO-6116D-DE6-40H



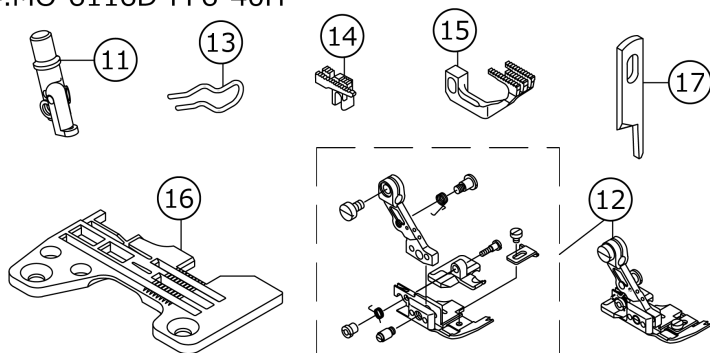
3. MO-6116D-DF6-40H



2. MO-6116D-DF4-40H



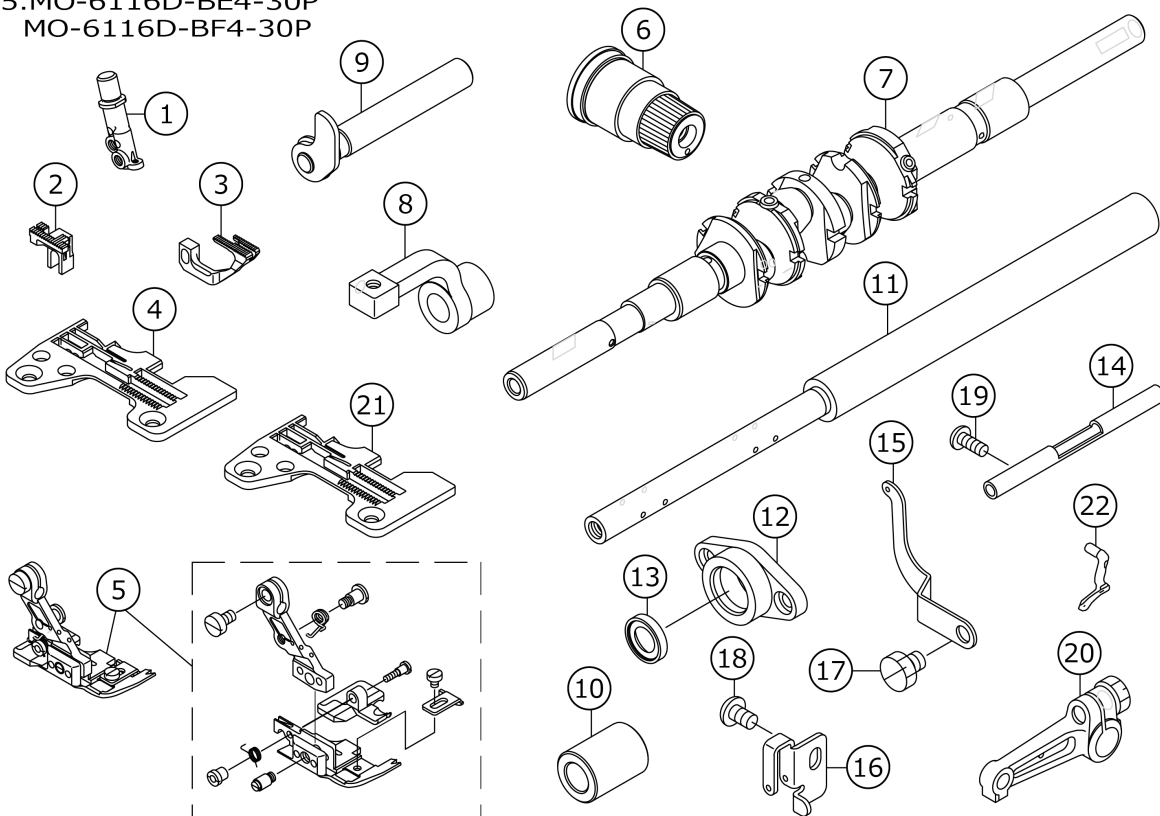
4. MO-6116D-FF6-40H



| No. | 品番          | 品名                         | 備考 | 子部品 | 消耗品 | 個数   |
|-----|-------------|----------------------------|----|-----|-----|------|
| 1   | 11882909    | MAIN FEED DOG              |    |     |     | 1.00 |
| 2   | 12173209    | DIFFERENTIAL FEED DOG      |    |     |     | 1.00 |
| 3   | R4608J6ED00 | THROAT PLATE               |    |     |     | 1.00 |
| 4   | 13150503    | KNIFE                      |    |     |     | 1.00 |
| 5   | R4508J6FD00 | THROAT PLATE               |    |     |     | 1.00 |
| 6   | 11987708    | MAIN FEED DOG              |    |     |     | 1.00 |
| 7   | 12173308    | DIFFERENTIAL FEED DOG      |    |     |     | 1.00 |
| 8   | R4608J6FD00 | THROAT PLATE               |    |     |     | 1.00 |
| 9   | 13150503    | KNIFE                      |    |     |     | 1.00 |
| 10  | 12154159    | PRESSER FOOT ASM.          |    |     |     | 1.00 |
| 11  | 12257507    | NEEDLE CLAMP, CHAIN LOOPER |    |     |     | 1.00 |
| 12  | 12154258    | PRESSER FOOT ASM.          |    |     |     | 1.00 |
| 13  | 12168209    | FINGER GUARD               |    |     |     | 1.00 |
| 14  | 11884004    | MAIN FEED DOG              |    |     |     | 1.00 |
| 15  | 12173308    | DIFFERENTIAL FEED DOG      |    |     |     | 1.00 |
| 16  | R4612J6FD00 | THROAT PLATE               |    |     |     | 1.00 |
| 17  | 13150503    | KNIFE                      |    |     |     | 1.00 |

# MO-6116D SUBCLASSES (2)

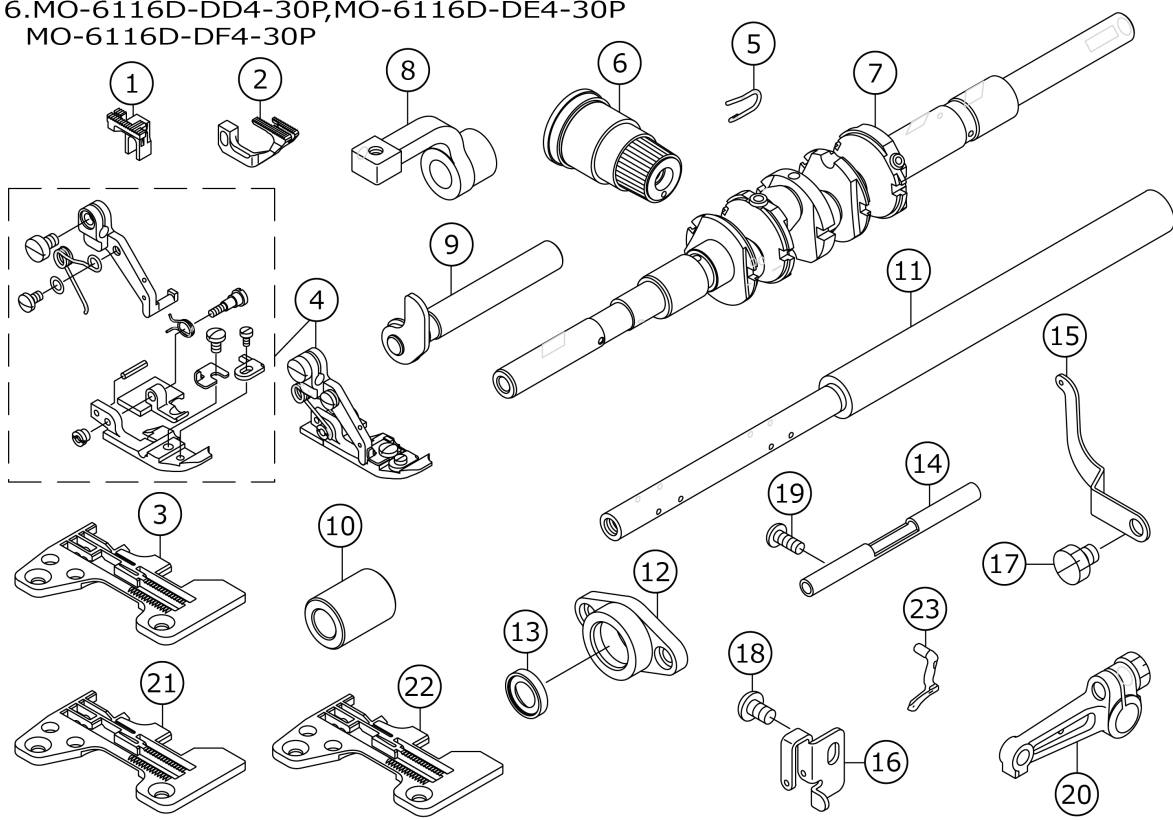
5.MO-6116D-BE4-30P  
MO-6116D-BF4-30P



| No. | 品番          | 品名                             | 備考                   | 子部品 | 消耗品 | 個数   |
|-----|-------------|--------------------------------|----------------------|-----|-----|------|
| 1   | 12150009    | CHAIN LOOPER NEEDLE CLAMP      |                      |     |     | 1.00 |
| 2   | 12171302    | MAIN FEED DOG                  |                      |     |     | 1.00 |
| 3   | 12174603    | SUB-FEED DOG                   |                      |     |     | 1.00 |
| 4   | R4505J6ED0A | THROAT PLATE                   | FOR MO-6116D-BE4-30P |     |     | 1.00 |
| 5   | 12153953    | PRESSER FOOT ASM.              |                      |     |     | 1.00 |
| 6   | 13138359    | THREAD TENSION SPRING JUNCTION |                      |     |     | 1.00 |
| 7   | 40004537    | MAIN SHAFT (30P) ASM.          |                      |     |     | 1.00 |
| 8   | 12115515    | PRESSER SHAFT ARM              |                      |     |     | 1.00 |
| 9   | 12115655    | PRESSER SHAFT ASM.             |                      |     |     | 1.00 |
| 10  | 12115812    | PRESSER SHAFT METAL            |                      |     |     | 1.00 |
| 11  | 40004609    | FEED SHAFT 30P                 |                      |     |     | 1.00 |
| 12  | 40004612    | FEED SHAFT THRUST COVER (30P)  |                      |     |     | 1.00 |
| 13  | GAK33025000 | OIL SEAL                       |                      |     |     | 1.00 |
| 14  | 12121703    | LOWER THREAD COPPER PIP        |                      |     |     | 1.00 |
| 15  | 40004732    | LOWER THREAD TAKE-UP LEVER     |                      |     |     | 1.00 |
| 16  | 12121901    | THREAD TAKE-UP LEVER GUIDE     |                      |     |     | 1.00 |
| 17  | SS9150730SP | SCREW 15/64-28 L=7             |                      |     |     | 1.00 |
| 18  | SM4050855SP | SCREW                          |                      |     |     | 1.00 |
| 19  | SM4041055SP | SCREW                          |                      |     |     | 1.00 |
| 20  | 13131057    | UPPER LOOPER ARM A ASM.        |                      |     |     | 1.00 |
| 21  | R4505J6FD0A | THROAT PLATE                   | FOR MO-6116D-BF4-30P |     |     | 1.00 |
| 22  | 11888104    | UPPER LOOPER                   |                      |     |     | 1.00 |

# MO-6116D SUBCLASSES (3)

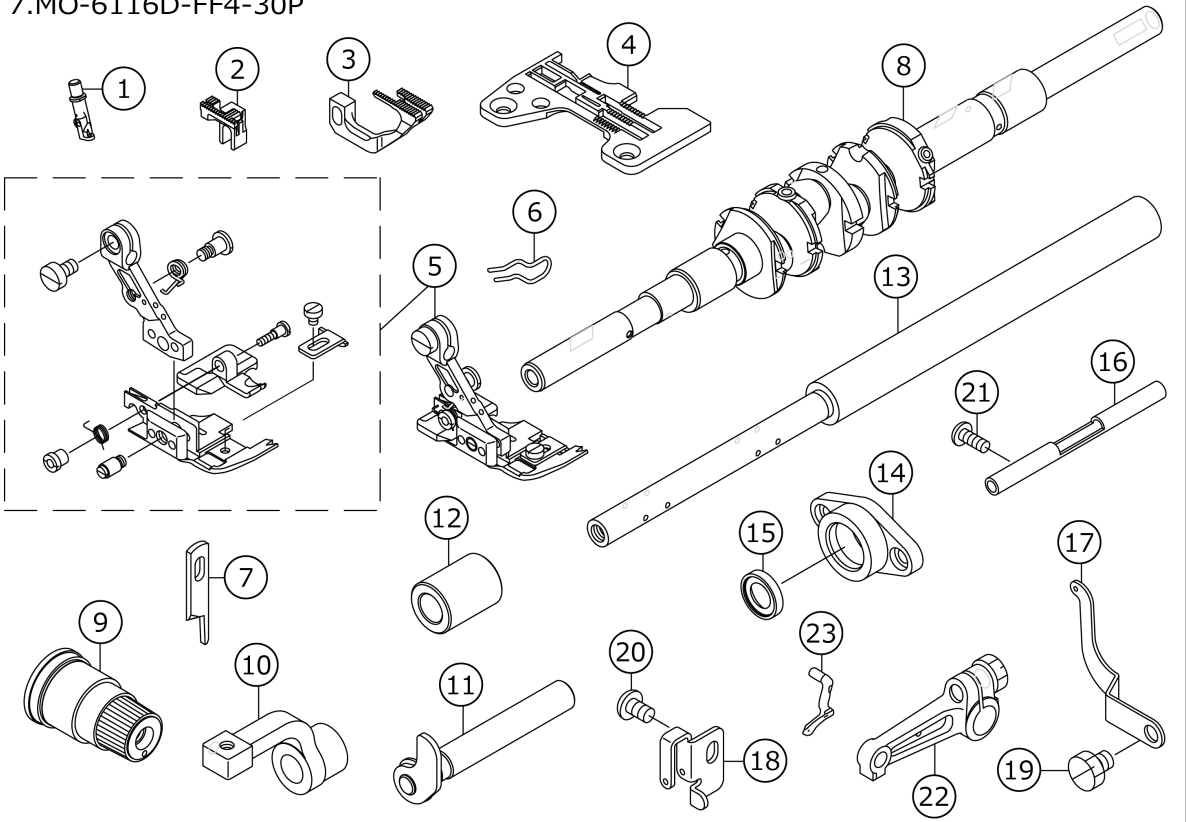
6.MO-6116D-DD4-30P,MO-6116D-DE4-30P  
MO-6116D-DF4-30P



| No. | 品番          | 品名                             | 備考                   | 子部品 | 消耗品 | 個数   |
|-----|-------------|--------------------------------|----------------------|-----|-----|------|
| 1   | 12171302    | MAIN FEED DOG                  |                      |     |     | 1.00 |
| 2   | 12174306    | SUB-FEED DOG                   |                      |     |     | 1.00 |
| 3   | R4508J6DD0A | THROAT PLATE                   | FOR MO-6116D-DD4-30P |     |     | 1.00 |
| 4   | 11879954    | PRESSER FOOT ASM.              |                      |     |     | 1.00 |
| 5   | 11894904    | FINGER GUARD                   |                      |     |     | 1.00 |
| 6   | 13138359    | THREAD TENSION SPRING JUNCTION |                      |     |     | 1.00 |
| 7   | 40004537    | MAIN SHAFT (30P) ASM.          |                      |     |     | 1.00 |
| 8   | 12115515    | PRESSER SHAFT ARM              |                      |     |     | 1.00 |
| 9   | 12115655    | PRESSER SHAFT ASM.             |                      |     |     | 1.00 |
| 10  | 12115812    | PRESSER SHAFT METAL            |                      |     |     | 1.00 |
| 11  | 40004609    | FEED SHAFT 30P                 |                      |     |     | 1.00 |
| 12  | 40004612    | FEED SHAFT THRUST COVER (30P)  |                      |     |     | 1.00 |
| 13  | GAK33025000 | OIL SEAL                       |                      |     |     | 1.00 |
| 14  | 12121703    | LOWER THREAD COPPER PIP        |                      |     |     | 1.00 |
| 15  | 40004732    | LOWER THREAD TAKE-UP LEVER     |                      |     |     | 1.00 |
| 16  | 12121901    | THREAD TAKE-UP LEVER GUIDE     |                      |     |     | 1.00 |
| 17  | SS9150730SP | SCREW 15/64-28 L=7             |                      |     |     | 1.00 |
| 18  | SM4050855SP | SCREW                          |                      |     |     | 1.00 |
| 19  | SM4041055SP | SCREW                          |                      |     |     | 1.00 |
| 20  | 13131057    | UPPER LOOPER ARM A ASM.        |                      |     |     | 1.00 |
| 21  | R4508J6ED0A | THROAT PLATE                   | FOR MO-6116D-DE4-30P |     |     | 1.00 |
| 22  | R4508J6FD0A | THROAT PLATE                   | FOR MO-6116D-DF4-30P |     |     | 1.00 |
| 23  | 11888104    | UPPER LOOPER                   |                      |     |     | 1.00 |

# MO-6116D SUBCLASSES (4)

7.MO-6116D-FF4-30P



| No. | 品番          | 品名                             | 備考 | 子部品 | 消耗品 | 個数   |
|-----|-------------|--------------------------------|----|-----|-----|------|
| 1   | 12150306    | NEEDLE CLAMP, CHAIN LOOPER     |    |     |     | 1.00 |
| 2   | 12171609    | MAIN FEED DOG                  |    |     |     | 1.00 |
| 3   | 12174702    | SUB-FEED DOG                   |    |     |     | 1.00 |
| 4   | R4512J6FDOA | THROAT PLATE                   |    |     |     | 1.00 |
| 5   | 12154258    | PRESSER FOOT ASM.              |    |     |     | 1.00 |
| 6   | 12168209    | FINGER GUARD                   |    |     |     | 1.00 |
| 7   | 13150503    | KNIFE                          |    |     |     | 1.00 |
| 8   | 40004537    | MAIN SHAFT (30P) ASM.          |    |     |     | 1.00 |
| 9   | 13138359    | THREAD TENSION SPRING JUNCTION |    |     |     | 1.00 |
| 10  | 12115515    | PRESSER SHAFT ARM              |    |     |     | 1.00 |
| 11  | 12115655    | PRESSER SHAFT ASM.             |    |     |     | 1.00 |
| 12  | 12115812    | PRESSER SHAFT METAL            |    |     |     | 1.00 |
| 13  | 40004609    | FEED SHAFT 30P                 |    |     |     | 1.00 |
| 14  | 40004612    | FEED SHAFT THRUST COVER (30P)  |    |     |     | 1.00 |
| 15  | GAK33025000 | LOWER THREAD COPPER PIP        |    |     |     | 1.00 |
| 16  | 12121703    | LOWER THREAD COPPER PIP        |    |     |     | 1.00 |
| 17  | 40004732    | LOWER THREAD TAKE-UP LEVER     |    |     |     | 1.00 |
| 18  | 12121901    | THREAD TAKE-UP LEVER GUIDE     |    |     |     | 1.00 |
| 19  | SS9150730SP | SCREW 15/64-28 L=7             |    |     |     | 1.00 |
| 20  | SM4050855SP | SCREW                          |    |     |     | 1.00 |
| 21  | SM4041055SP | SCREW                          |    |     |     | 1.00 |
| 22  | 13131057    | UPPER LOOPER ARM A ASM.        |    |     |     | 1.00 |
| 23  | 11888104    | UPPER LOOPER                   |    |     |     | 1.00 |



# HOW TO MAKE USE OF THIS PARTS LIST

1.As to "#01" and "#02" refer to the "Note" given at the bottom of the respective pages.

2.Codes on the "Qty" column

- Each numeral indicates the number of parts required.
- "0.1" and "2.5" indicate the length (in meters) of the respective parts.

3.Parentheses mean that the corresponding part is a subpart that constructs an assembly part.

4.Dotted lines on the Figures indicate assembly parts.

1. リストページの# 0 1、# 0 2の印は、ページ下の"注記"の説明を参照下さい。
2. 数量欄の数字は、個数を表し、0. 1、2. 5等の数値は、長さ（単位メートル）を表します。
3. 数量欄の（ ）は、組部品を構成している子部品であることを意味します。
4. イラストページの-----枠は、組構成であることを意味します。